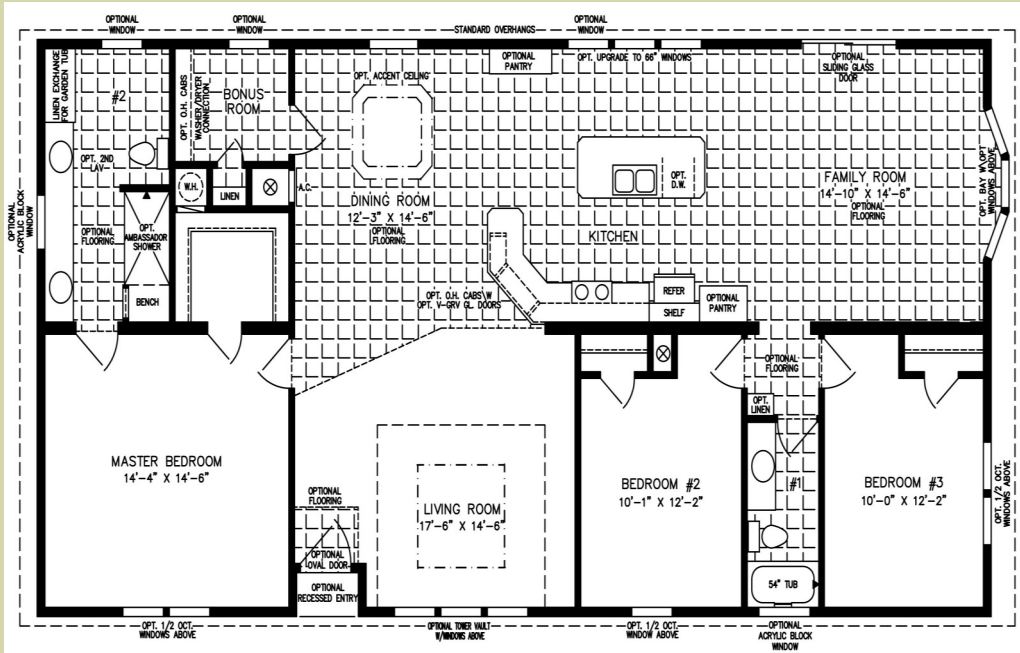


# 9210 Pinehaven Way

Reduced \$159,900



The Pines at Sandal Haven Lot# 41 — Move In Today!

**The Sawgrass** is a brand new never lived in model home with 1840 s.f. A 32'x60' Home. This home Features Cathedral Ceilings w/ Tray Accents, Custom Tiled Shower, 18" Ceramic Tile Flooring in Baths, Dining and Living Room, 6 panel Colonial Interior Doors, Recessed Formal Entry, 200 Amp Electrical Service, Whirlpool Gold Appliances, 5" Crown Molding, 5" Baseboard, Finished Drywall Interior, Irrigation System and much more. Please view Virtual Tour on our website listed below.

- **3 Bedrooms**
- **2 Bathrooms**
- **1840 sf.**
- **2x8, 2x6, 2x4 Walls all on 16" Centers**
- **5 Year Warranty**
- **Easy Financing Terms**
- **Little or No Down payment**



"YOUR JACOBSEN CONNECTION"

16259 US Hwy 19 N.  
Clearwater, FL. 33764  
Website: [www.citrus-meadowood.com](http://www.citrus-meadowood.com)

Phone: 727-535-5262  
Toll Free: 800-838-8888  
Fax: 727-535-6822  
E-mail: [info@citrus-meadowood.com](mailto:info@citrus-meadowood.com)

